

X  
X  
X  
X  
X  
X  
X  
X  
X  
X  
X  
X



XXXXXXXXXXXXXXXXXXXXXXXXXXXX

ART GALLERY FABRICS®

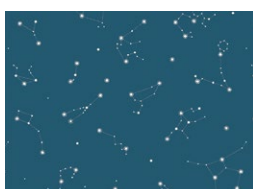
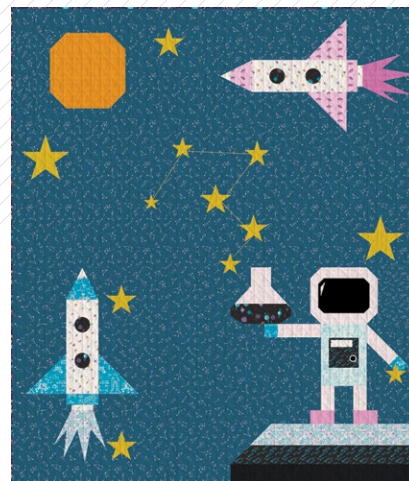


# STELLAR LAB

QUILT DESIGNED BY AGFstudio

## Rocket Science

FABRICS DESIGNED BY AGF STUDIO



**Fabric A**  
RKS-95406  
CONSTELLATIONS



**Fabric B**  
RKS-95410  
GLAZED SPACE



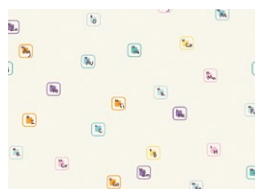
**Fabric C**  
RKS-95409  
INFINITY TRIANGLE SUN



**Fabric D**  
RKS-95403  
STELLAR ENGINEERING BLUE



**Fabric E**  
RKS-95413  
PERFECT CHEMISTRY



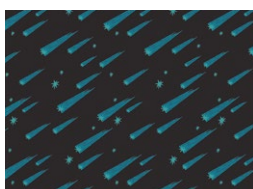
**Fabric F**  
RKS-95405  
PERIODIC UNIVERSE



**Fabric G**  
DSE727  
AIRY



**Fabric H**  
PE-499  
DEEP BLACK



**Fabric I**  
RKS-95415  
SHOOTING STARS



**Fabric J**  
PE-407  
EMPIRE YELLOW



**Fabric K**  
RKS-95407  
INFINITY TRIANGLE MOON



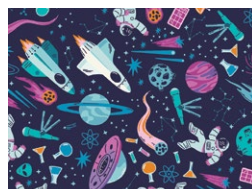
**Fabric L**  
RKS-95401  
INFINITY TRIANGLE VENUS



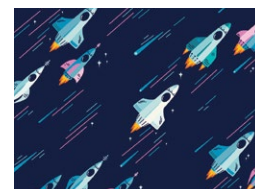
**Fabric M**  
RKS-95402  
PLANETARY PARADE



**Fabric N**  
RKS-95411  
STELLAR ENGINEERING WHITE



**Fabric O (Binding)**  
RKS-95400  
INTERGALACTIC



**Backing**  
RKS-95408  
ROCKET RIDE





FINISHED SIZE | 76½" x 89½"

## FABRIC REQUIREMENTS

Fabric <b>A</b>	RKS95406	5½ yd.
Fabric <b>B</b>	RKS95410	F8.
Fabric <b>C</b>	RKS95409	FQ.
Fabric <b>D</b>	RKS95403	FQ.
Fabric <b>E</b>	RKS95413	FQ.
Fabric <b>F</b>	RKS95405	FQ.
Fabric <b>G</b>	DSE-727	FQ.
Fabric <b>H</b>	PE-499	FQ.
Fabric <b>I</b>	RKS95415	FQ.
Fabric <b>J</b>	PE-407	FQ.
Fabric <b>K</b>	RKS95407	F8.
Fabric <b>L</b>	RKS95401	F8.
Fabric <b>M</b>	RKS95402	F8.
Fabric <b>N</b>	RKS95411	F8.
Fabric <b>O</b>	RKS95400	¾ yd.

**BACKING FABRIC**  
RKS95408 5½ yds (Suggested)

**BINDING FABRIC**  
Fabric **O** RKS95400 ¾ yd. (Included)

## CUTTING DIRECTIONS

¼" seam allowances are included.  
WOF means width of fabric.

### Fabric A

- Cut 2 (two) 25½" x WOF strips, Then:
  - Sub-cut into 2 (two) 25½" x 38" rectangles.
- Cut 1 (one) 14" x WOF strip, then:
  - Sub-cut into 1 (one) 14" x 41" strip.
- Cut 1 (one) 17½" x WOF strip, then:
  - Sub-cut into 1 (one) 17½" x 27" rectangle.
  - Sub-cut into 1 (one) 17¼" x 14" rectangle.
- Cut 1 (one) 18" x WOF strip, then:
  - Sub-cut into 1 (one) 18" x 23½" rectangle.
- Cut 1 (one) 10½" x WOF strip, then:
  - Sub-cut into 1 (one) 10½" x 23½" strip.
- Cut 1 (one) 8¾" x WOF strip, then:
  - Sub-cut into 1 (one) 8¾" square, and
  - Sub-cut into 2 (two) 8¾" squares.
- Cut 2 (two) 8" x WOF strips, then:
  - Sub-cut into 4 (four) 8" x 16½" rectangles, and
  - Sub-cut into 2 (two) 8" squares.
- Cut 1 (one) 7¾" x WOF strip, then:
  - Sub-cut into 1 (one) 7¾" x 11" rectangle, and
  - Sub-cut into 1 (one) 7½" x 14½" rectangle, and
- Cut into 1 (one) 7½" square.

- Cut 1 (one) 6" x WOF strip, then:
  - Sub-cut into 1 (one) 6" x  $9\frac{3}{4}$ " rectangle.
- Cut 2 (two) 5" x WOF strips, then:
  - Sub-cut into 2 (two) 5" x  $21\frac{1}{2}$ " strips.
- Cut 1 (one)  $4\frac{1}{2}$ " x WOF strip, then:
  - Sub-cut into 2 (two)  $4\frac{1}{4}$ " x  $4\frac{1}{2}$ " rectangles.
- Cut 1 (one) 4" x WOF strip, then:
  - Sub-cut into 1 (one) 4" x 11" strip, and
  - Sub-cut into 1 (one) 4" x 5" rectangle, and
  - Sub-cut into 2 (two) 4" x  $4\frac{1}{4}$ " rectangles, and
  - Sub-cut into 1 (one) 4" square.
- Cut 2 (two)  $3\frac{1}{2}$ " x WOF strips, then:
  - Sub-cut into 4 (four)  $3\frac{1}{2}$ " x 8" strips, and
  - Sub-cut into 4 (four)  $3\frac{1}{2}$ " x  $6\frac{1}{2}$ " rectangles, and
  - Sub-cut into 4 (four)  $3\frac{1}{2}$ " squares.
- Cut 3 (three) 3" x WOF strips, then:
  - Sub-cut into 1 (two) 3" x 27" strips, and
  - Sub-cut into 1 (one) 3" x  $15\frac{1}{4}$ " strip, and
  - Sub-cut into 1 (one) 3" x  $7\frac{3}{4}$ " rectangle, and
  - Sub-cut into 1 (one) 3" x  $6\frac{3}{4}$ " rectangle, and
  - Sub-cut into 1 (one) 3" x 4" rectangle.
- Cut 1 (one)  $2\frac{1}{2}$ " x WOF strip, then:
  - Sub-cut into 1 (one)  $2\frac{1}{2}$ " x 27" strip, and
  - Sub-cut into 4 (four)  $2\frac{1}{2}$ " squares, and
  - Sub-cut into 2 (two) 2" x  $2\frac{3}{4}$ " rectangle, and
  - Sub-cut into 1 (one)  $1\frac{1}{2}$ " x 11" strip, and
  - Sub-cut into 4 (four)  $1\frac{1}{2}$ " squares.

## Fabric B

- Cut 1 (one)  $8\frac{3}{8}$ " x WOF strip, then:
  - Sub-cut into 1 (one)  $8\frac{3}{8}$ " square.
- Cut 1 (one)  $4\frac{1}{2}$ " x WOF strip, then:
  - Sub-cut into 1 (one)  $4\frac{1}{2}$ " x  $6\frac{1}{2}$ " rectangle.
- Cut 1 (one)  $2\frac{1}{2}$ " x WOF strip, then:
  - Sub-cut into 1 (one)  $2\frac{1}{2}$ " x  $6\frac{1}{2}$ " strip.

## Fabric C

- Cut 1 (one) 14½" square.

## Fabric D

- Cut 1 (one)  $8\frac{3}{8}$ " x WOF strip, then:
  - Sub-cut into 1 (one)  $8\frac{3}{8}$ " square.
  - 1 (one)  $7\frac{1}{2}$ " square.
- Cut 1 (one)  $6\frac{1}{2}$ " x WOF strip, then:
  - Sub-cut into 1 (one)  $6\frac{1}{2}$ " x  $4\frac{1}{2}$ " rectangle, and
  - Sub-cut into 1 (one) 3" square.
- Cut 1 (one)  $2\frac{1}{2}$ " x WOF strip, then:
  - Sub-cut into 1 (one)  $2\frac{1}{2}$ " x  $6\frac{1}{2}$ " rectangle.

## Fabric E

- Cut 2 (two) 22" x WOF strip, then:
  - Sub-cut into 2 (two) 21" x 4½" strips.
- Cut 1 (one) Template A.



## Fabric F

- Cut 2 (two)  $6\frac{1}{2}$ " x WOF strips, then:  
-Sub-cut into 2 (two)  $6\frac{1}{2}$ " x 18" strips.
- Cut 1 (one)  $2\frac{1}{2}$ " x WOF strip, then:  
-Sub-cut into 2 (two)  $2\frac{1}{2}$  x  $6\frac{1}{2}$ " rectangles.
- Cut 1 (one)  $1\frac{1}{2}$ " x WOF strip, then:  
-Sub-cut into 3 (three)  $1\frac{1}{2}$ " x  $4\frac{1}{2}$ " rectangles.
- Cut 1 (one) Template B.

## Fabric G

- Cut 1 (one)  $8\frac{3}{4}$ " x WOF strip, then:  
-Sub-cut into 1 (one)  $8\frac{3}{4}$ " x 11" rectangle, and  
-Sub-cut into 2 (two) 2" x 7" rectangles, and  
-Sub-cut into 4 (four)  $1\frac{1}{2}$ " squares.
- Cut 2 (two)  $2\frac{1}{2}$ " x WOF strips, then:  
-Sub-cut into 2 (two)  $2\frac{1}{2}$ " x 13" strips.
- Cut 1 (one) 3" x WOF strip, then:  
-Sub-cut into 1 (one) 3" x  $8\frac{1}{2}$ " strip, and  
-Sub-cut into 2 (two) 3" x 5" rectangles.
- Cut 1 (one) Template C.

## Fabric H

- Cut 2 (two)  $4\frac{1}{2}$ " x WOF strips, then:  
-Sub-cut into 2 (two)  $4\frac{1}{2}$ " x 21" strips.
- Cut 1 (one) 7" x WOF strip, then:  
-Sub-cut into 7" x 10" rectangle.
- Cut 1 (one) Template D.

## Fabric I

- Cut 2 (two)  $4\frac{1}{2}$ " x WOF strips, then:  
-Sub-cut into 2 (two)  $4\frac{1}{2}$ " x 21" strips.
- Cut 1 (one)  $5\frac{1}{2}$ " x WOF strip, then:  
-Sub-cut into  $5\frac{1}{2}$ " squares.

## Fabric J

- Cut 2 (two) Star 1 template.
- Cut 6 (six) Star 2 template.
- Cut 3 (three) Star 3 template.
- Cut 2 (two) Star 4 template.

## Fabric K

- Cut 1 (one) 4" x WOF strip, then:  
-Sub-cut into 4" x  $4\frac{1}{4}$ " rectangle.
- Cut 1 (one)  $11\frac{3}{4}$ " x WOF strip, then:  
-Sub-cut into 1 (one)  $11\frac{3}{4}$ " x  $3\frac{3}{4}$ " rectangle.

## Fabric L

- Cut 1 (one) 3" x WOF strip, then:  
-Sub-cut into 2 (two) 3" x 5" rectangles.
- Cut 1 (one) Template A.

## Fabric M

- Cut 1 (one)  $11\frac{3}{4}$ " x WOF strip, then:  
-Sub-cut into 1 (one)  $11\frac{3}{4}$ " x  $4\frac{1}{4}$ " strip.
- Cut 4 (four) Template E.

## Fabric N

- Cut 1 (one) 12" x WOF strip, then:  
-Sub-cut into 12" x 9" rectangle .

## Fabric O (binding)

- Cut 8 (eight)  $2\frac{1}{2}$ " x WOF strips.

## CONSTRUCTION

*Sew all rights sides together with 1/4" seam allowance.*

### Half Square Triangle (HST) technique.

- Place 1 (one) 8 3/8" square from fabrics **A** and **B** right sides together.

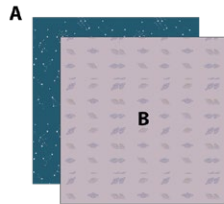


DIAGRAM 1

- On the wrong side of fabric **B** square, mark a diagonal line from corner to corner.

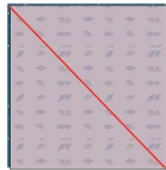


DIAGRAM 2

- Sew a SCANT 1/4" seam on each side of the diagonal line and with a rotary cutter cut through the drawn line.

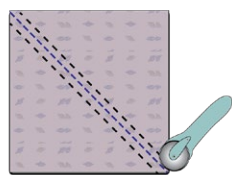


DIAGRAM 3

- Separate each half square triangle (HST) outward and lightly press. Be careful to only press up and down, NOT back and forth so as not to stretch them. Your seams should be pressed (both layers) towards the darker color.
- Trim each half square triangle (HST) to a 8" square.

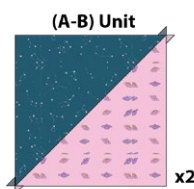


DIAGRAM 4

- In the same manner make a total of 2 (two) **A-D** HST units using the remaining 1 (one) 8 3/8" square from fabric **A** and 1 (one) 8 3/8" square from fabric **D**.

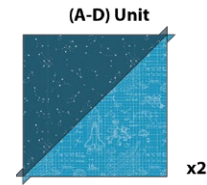


DIAGRAM 5

- Sew 1 (one) 2 1/2" x 6 1/2" rectangle from fabric **F** and 1 (one) 4 1/2" x 6 1/2" rectangle from fabric **B**.

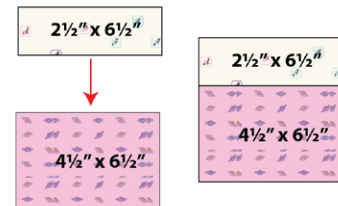


DIAGRAM 6

### Corner rectangle triangle technique

- Take 1 (one) 3 1/2" x 6 1/2" rectangle from Fabric **A** and 1 (one) 6 1/2" square **F-B** unit previously sewn.
- Position the Fabric **A** rectangle on the left edge of the **F-B** unit, with the right sides facing up, as shown in the diagram.

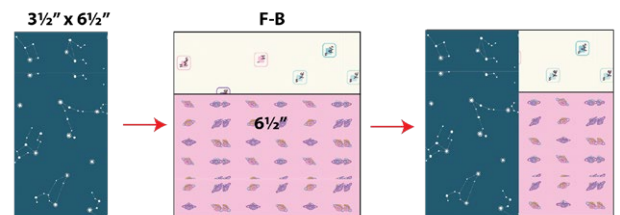


DIAGRAM 7

- Using your clear ruler, line up 1/4" off the angle using the 3 1/2" x 6 1/2" rectangle's diagonal corner.
- See diagram below:

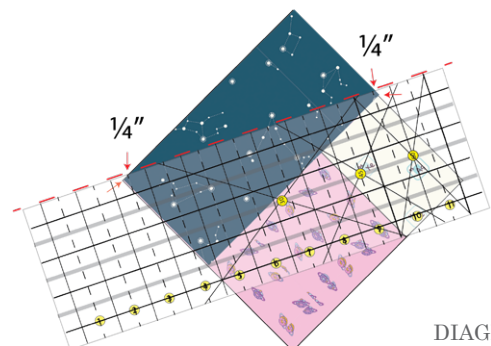


DIAGRAM 8

- Trim along the ruler to cut the outer triangle off.

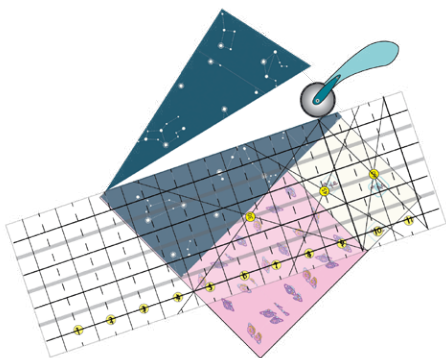


DIAGRAM 9

- Flip the inside piece side down and rotate, align the cut edges so that the diagonal corners of the triangle touch the edges of the larger block.
- Draw a line from corner to corner on the triangle piece, and sew a scant quarter along the line.

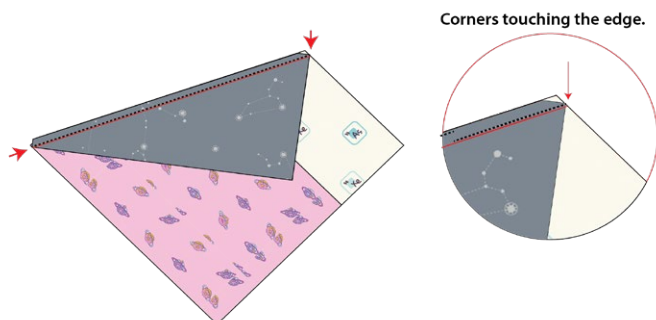


DIAGRAM 10

- Press open toward the darker side.
- With the remaining  $3\frac{1}{2}$ " x  $6\frac{1}{2}$ " rectangle from fabric **A**, repeat the same steps but on the other side of the  $6\frac{1}{2}$ " **F-B** square unit. We will call this Unit 1.

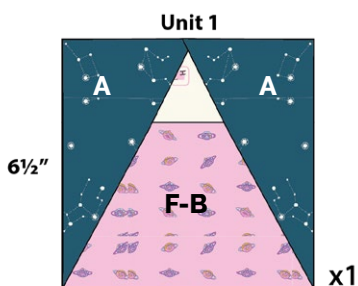


DIAGRAM 11

- In the same manner, make a corner rectangle triangle unit using 1 (one)  $4\frac{1}{2}$ " x  $6\frac{1}{2}$ " rectangle from fabric **D**, 1 (one)  $2\frac{1}{2}$ " x  $6\frac{1}{2}$ " rectangle from fabric **F** and 2 (two)  $3\frac{1}{2}$ " x  $6\frac{1}{2}$ " rectangles from fabric **A**.
- We will call this Unit 2

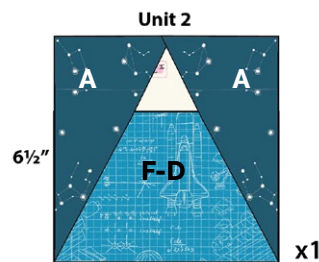


DIAGRAM 12

## The Rocket ship Block

### Section 1 ,Section 2 , Section 3 and Section 4.

- Sew 1 (one) 8" x  $16\frac{1}{2}$ " rectangle from fabric **A**, 1 (one) 8" **A-B** HST unit and 1 (one)  $3\frac{1}{2}$ " x 8" rectangle from fabric **A**.
- In the same manner, sew the remaining **A-D** HST Unit, 1 (one) 8" x  $16\frac{1}{2}$ " rectangle from fabric **A** and 1 (one)  $3\frac{1}{2}$ " x 8" rectangle from fabric **A**.
- NOTE: Make sure the **A-B** HST Units and the **A-D** HST Units are mirrored to resemble Rocket ship Wings.
- See Diagram below:

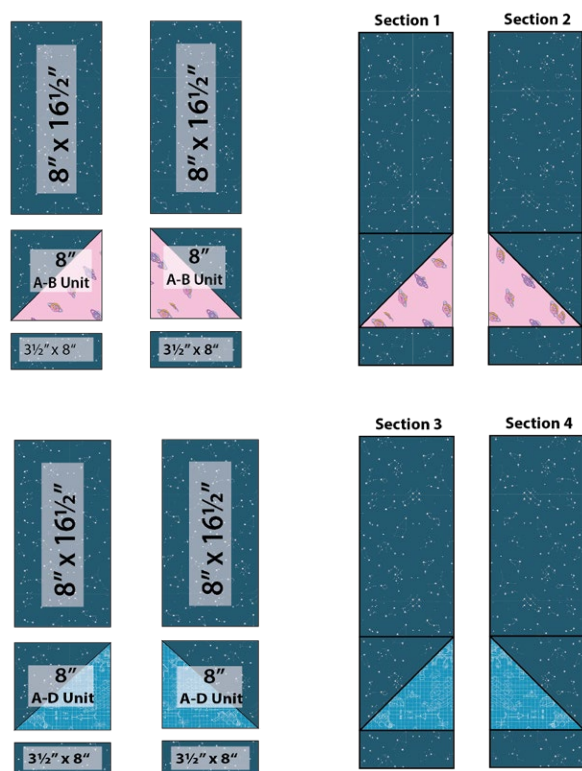


DIAGRAM 13



## Unit 3

- Sew 1 (one)  $1\frac{1}{2}$ "x  $4\frac{1}{2}$ " rectangle from fabric **F** in between 2 (two)  $1\frac{1}{2}$ " squares from fabric **A**. Make 1 (one) more by sewing the remaining  $1\frac{1}{2}$ "x  $4\frac{1}{2}$ " rectangle from fabric **F** in between 2 (two)  $1\frac{1}{2}$ " squares from fabric **A**

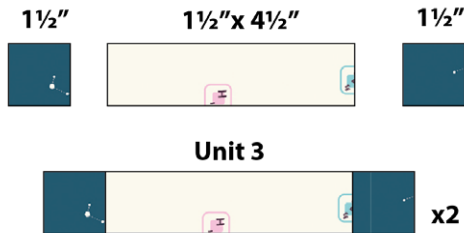


DIAGRAM 14

## Section 5 and Section 6

- Sew 1 (one) Unit 1, 1 (one) 6½" x 18" rectangle from fabric **F** 1 (one) 2½" x 6½" rectangle from fabric **B** and 1 (one) Unit 3 together.
- In the same manner, sew Unit 2, 1 (one) 6½" x 18" rectangle from fabric **F**, 1 (one) 2½" x 6½" rectangle from fabric **D** and 1 (one) Unit 3 together.
- Finally, using Steam a seam place 2 (two) Template E from fabric **M** as windows on the Rocket ship.
- Measure 9" from the top of the Rocket ship down for the first one and 3" down for the second one.

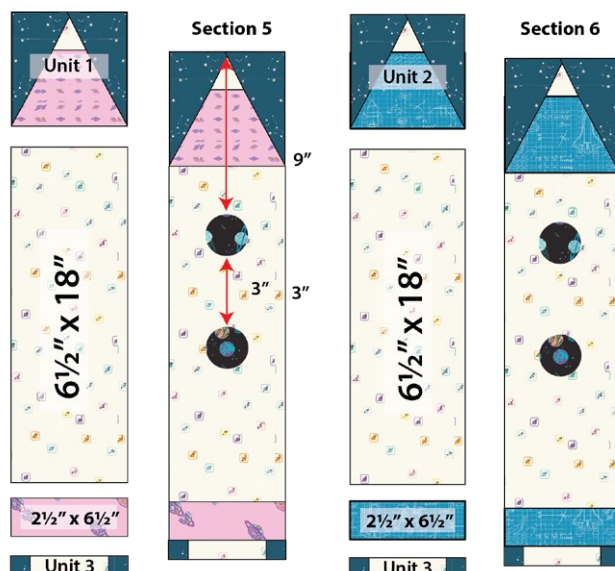


DIAGRAM 15

## Section 7

- Sew Sections 1, 5 and 2 together .They should measure 27" x 24" .

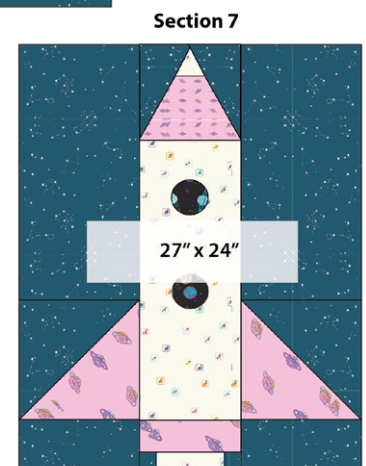
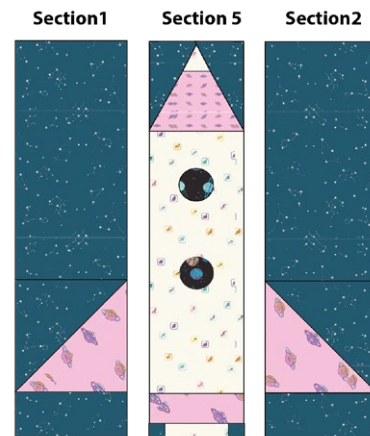


DIAGRAM 16

## Section 8

- Sew Sections 3, 6 and 4 together . They should measure 27" x 24"

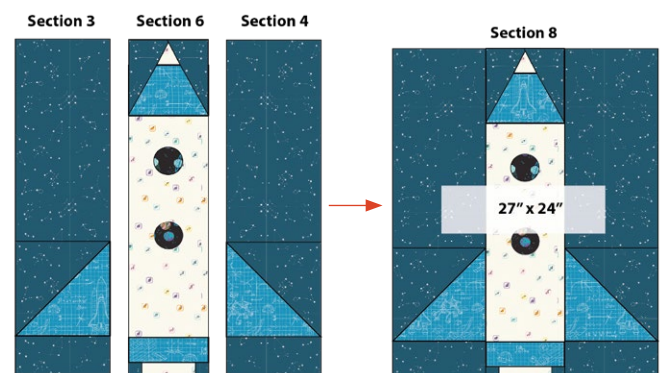


DIAGRAM 17



XX

- ## Unit 6

- 

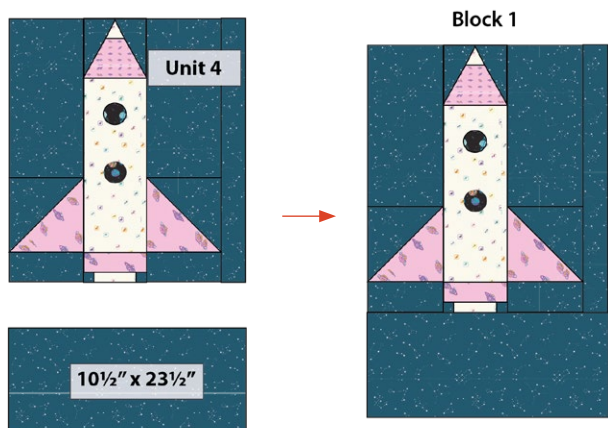
Unit 5

$17\frac{1}{2}" \times 27"$

**Unit 6**

A rocket ship is positioned on a grid. The rocket's body is white with yellow stars and two black circular windows. The nose cone and the four side fins are blue with yellow stars. A red arrow points down to the top of the rocket, labeled "Unit 6".

- DIAGRAM 21



## Block 2

- 

## Block 2

- 3" x 27"
- Section 8
- Unit 5
- 

artgalleryfabrics.com

## The Lab Bottle

### Unit 7

- Sew 1 (one)  $11\frac{3}{4}" \times 3\frac{3}{4}"$  rectangle from fabric **K** and 1 (one)  $11\frac{3}{4}" \times 4\frac{1}{4}"$  rectangle from fabric **M**.

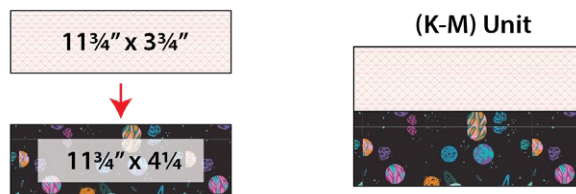


DIAGRAM 23

- Using the previously explained corner rectangle triangle method, place 1 (one)  $4\frac{1}{4}" \times 4\frac{1}{2}"$  rectangle from fabric **A** over (K-M) unit, on the top left side and both pieces facing up.
- Using your clear ruler, line up  $\frac{1}{4}"$  off the angle using the  $4\frac{1}{4}" \times 4\frac{1}{2}"$  rectangle's diagonal corner.
- Flip the inside piece side down and rotate, align the cut edges so that the diagonal corners of the triangle touch the edges of the larger block.
- Draw a line from corner to corner on the triangle piece, and sew along the line.
- In the same manner, place 1 (one)  $4\frac{1}{4}" \times 4\frac{1}{2}"$  rectangle from fabric **A** over the previously sewn piece and repeat the corner rectangle triangle method on the opposite side.

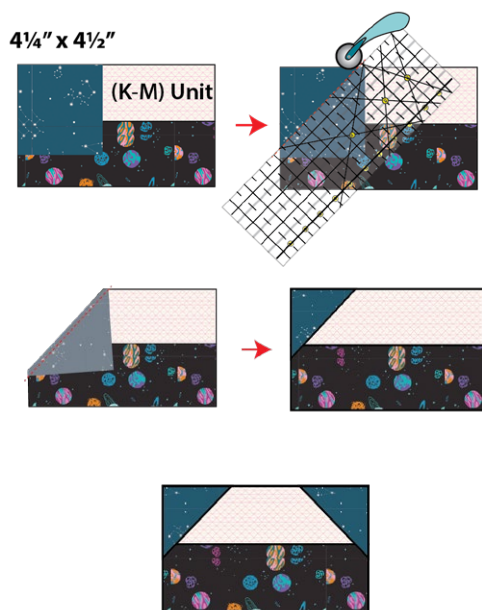
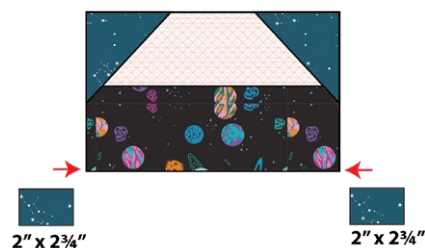


DIAGRAM 24

- Place 1 (one)  $2" \times 2\frac{3}{4}"$  rectangle facing up on each corner of the previously sewn piece and follow the corner rectangle triangle instructions for both ends.



### Unit 7

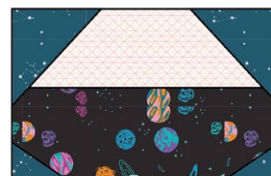
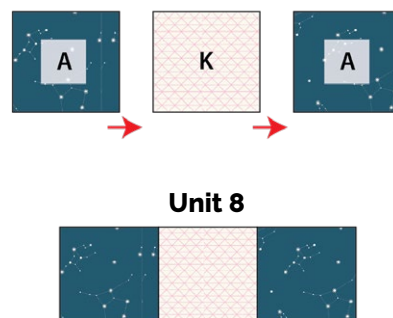


DIAGRAM 25

### Unit 8

- Sew 1 (one)  $4" \times 4\frac{1}{2}"$  rectangle from fabric **K** in between 2 (two)  $4" \times 4\frac{1}{4}"$  rectangles from fabric **A**.



### Unit 8

DIAGRAM 26

- Sew Unit 7 and unit 8 together to create Section 9.

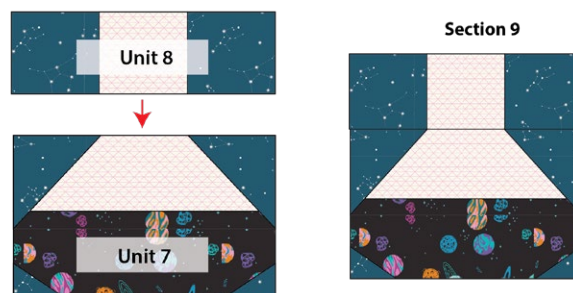


DIAGRAM 27



## Unit 9

### Center Blocks:

- To make center blocks you have to start by making corner square triangles.
- Start by placing one (1)  $1\frac{1}{2}$ " squares from fabric **G** at the left top corner of a 7" x 10" rectangle from fabric **H**, sew diagonally, trim  $\frac{1}{4}$ " away from seam allowance and press open.
- Place another  $1\frac{1}{2}$ " squares from fabric **G** to the top right corner of the same 7" x 10" rectangle from fabric **H**, sew diagonally, trim  $\frac{1}{4}$ " away from seam allowance and press open.
- Keep repeating the same steps with the other two (2)  $1\frac{1}{2}$ " squares from fabric **G** in the two bottom corners of the 7" x 10" rectangle from fabric **H**.

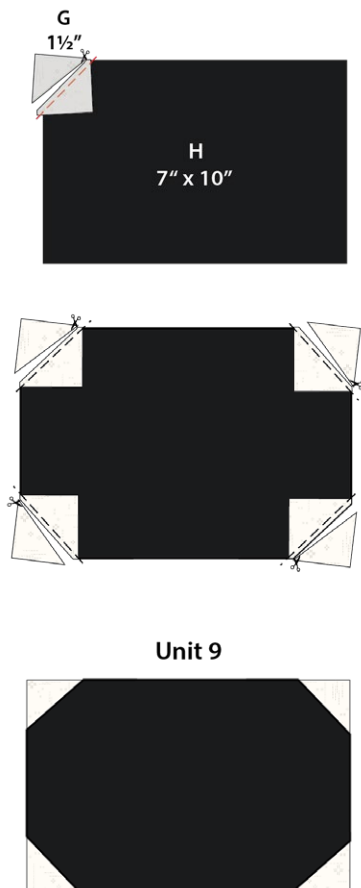


DIAGRAM 28

## Unit 10

- Mark a diagonal line on the wrong side of 4 (four)  $2\frac{1}{2}$ " square from fabric **A**. Using the same corner square technique, place a marked squares, right sides together and edges matched on the corner of 2 (two)  $2\frac{1}{2}$ " x 13" rectangle from fabric **G**. Sew on the drawn lines. Trim off corners, leaving a  $\frac{1}{4}$ " seam allowance.
- Press corners open. Makes 2 (two) Unit 10.

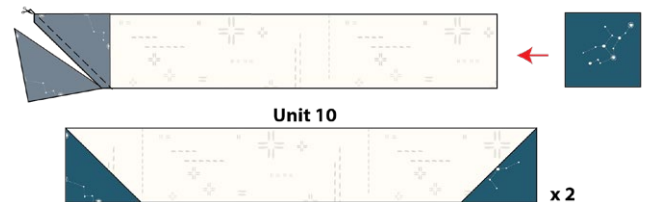


DIAGRAM 29

## Section 10

- Sew 1 (one) Unit 9, 2 (two) 2" x 7" strips from fabric **G** and 2 (two) Unit 10. Make sure to rotate Unit 10 accordingly. See Diagram below:
- Using Steam a Seam, place 1 (one) Template C on the top right corner of the Unit 9.

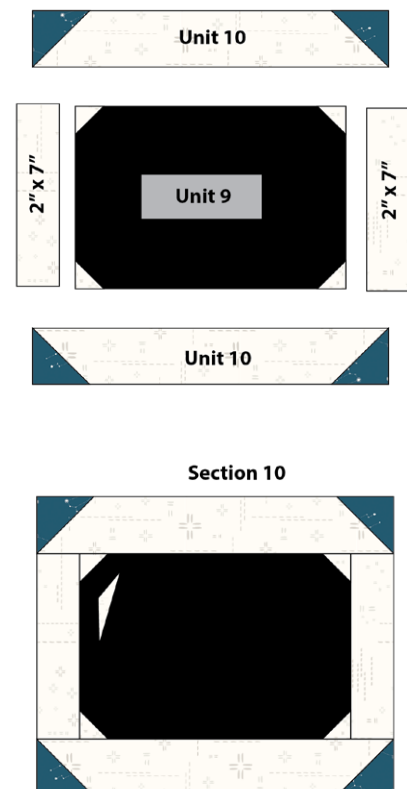


DIAGRAM 30

## Section 11

- Sew together 1 (one) Section 9, 1 (one) 4" x 11" rectangle from fabric **A**, 1 (one) Section 10 and 1 (one) 7¾" x 11" rectangle from fabric **A**.

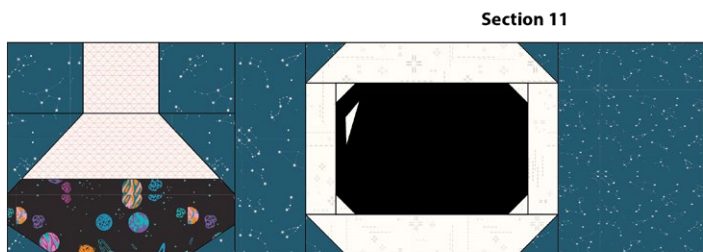
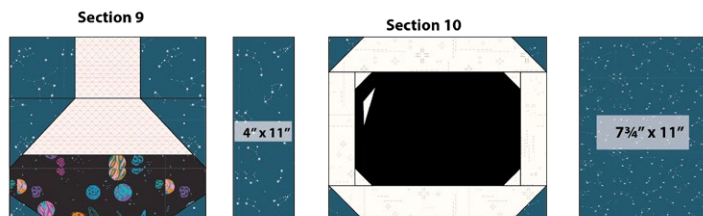


DIAGRAM 31

## Unit 11

- Sew together 1 (one) 3" x 6¾" rectangle from fabric **A**, 1 (one) 3" square from fabric **D** and 1 (one) 3" x 8½" strip from fabric **G**.

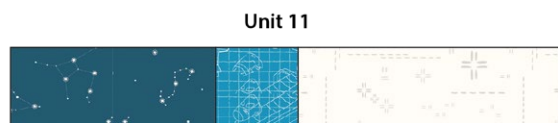


DIAGRAM 32

## Section 12

- Sew together Unit 11 and 1 (one) 14" x 17¼" rectangle from fabric **A**.

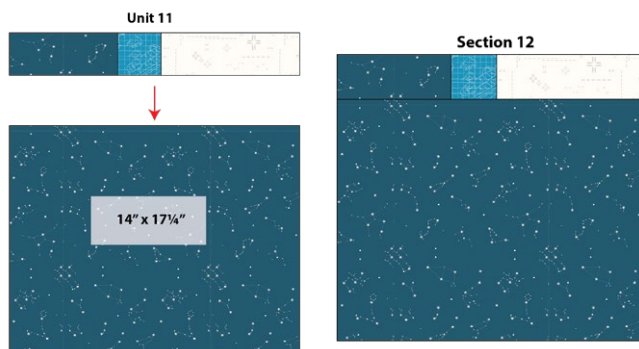


DIAGRAM 33

## Unit 12

- Sew 1 (one) 5" x 3" rectangle from fabric **A** in between 2 (two) 5" x 4" rectangle from fabric **G**.

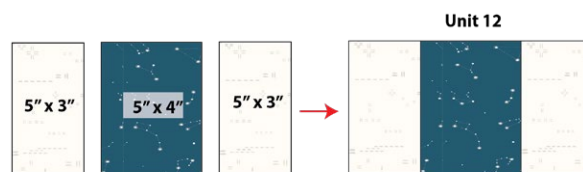


DIAGRAM 34

## Section 13

- Sew Unit 12 on the bottom of 1 (one) 12"x 9" rectangle from fabric **N** . See diagram below.

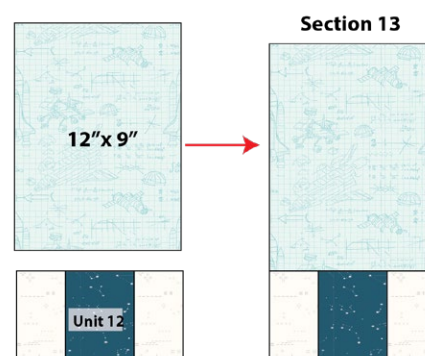


DIAGRAM 35

- Measure 2½" from top center of Section 13 and using steam a seam place 1 (one) 5½" square from fabric **I**.
- Measure ½" from top and left inside the 5½" square from fabric **I**, and using steam a seam place 1 (one) 1½" x 4" rectangle from fabric **F**.
- Using steam a seam place 1 (one) template D from fabric **H** on top of 1 (one) template B from fabric **F**, then place it on the bottom right corner.

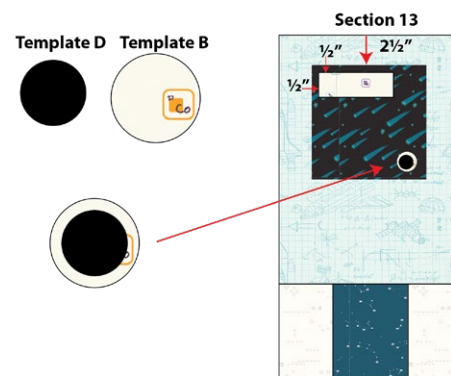


DIAGRAM 36



- Mark a diagonal line on the wrong side of 1 (one)  $7\frac{1}{2}$ " square from fabric **D**. Using the same corner square technique, place a marked squares, right sides together and edges matched on the corner of 1 (one)  $11" \times 8\frac{3}{4}"$  rectangle from fabric **C**. Sew on the drawn lines. Trim off corners, leaving a  $\frac{1}{4}"$  seam allowance. Press corners open.
- Makes 1 (one) Unit 13.

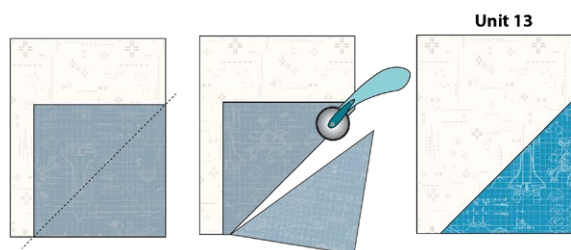


DIAGRAM 37

### Unit 14

- In the same manner, place right sides together 1 (one)  $7\frac{1}{2}$ " square from fabric **A** on the bottom left corner of Unit 13, then measure  $\frac{1}{4}"$  off and cut. Press your seams toward the darker color fabric.

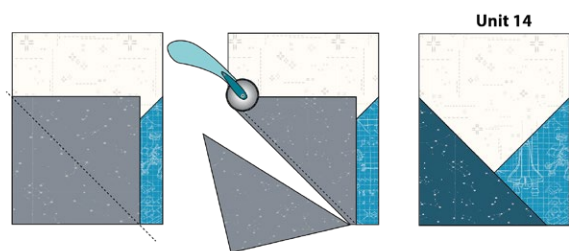


DIAGRAM 38

### Unit 15

- In the same way, place the remaining  $8\frac{3}{4}"$  square from fabric **A** on the top right corner of Unit 14, and using the corner square triangle technique sew them together, then measure  $\frac{1}{4}"$  off and cut. Press your seams toward the darker color fabric.

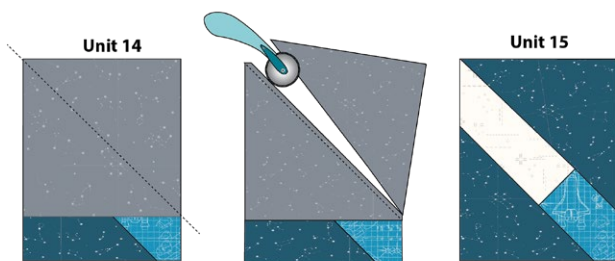


DIAGRAM 39

### Unit 16

- Place 1 (one) 4" square from fabric **A** on the bottom right corner of Unit 15, and using the corner square triangle technique, sew diagonally from corner to corner, then measure  $\frac{1}{4}"$  off and cut. Press your seams toward the darker color fabric.

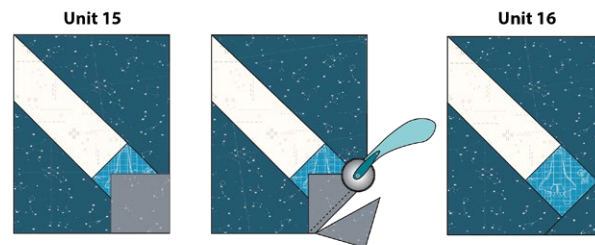


DIAGRAM 40

### Section 14

- Sew 1 (one)  $11" \times 1\frac{1}{2}"$  strip from fabric **A** on the right side of Unit 16 then, sew 1 (one)  $6" \times 9\frac{3}{4}"$  rectangle from fabric **A** to the bottom of the previously sewn piece.

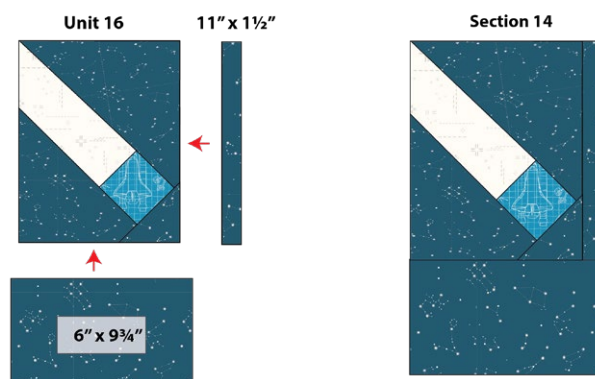
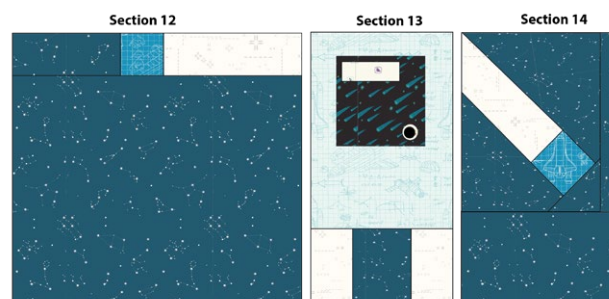


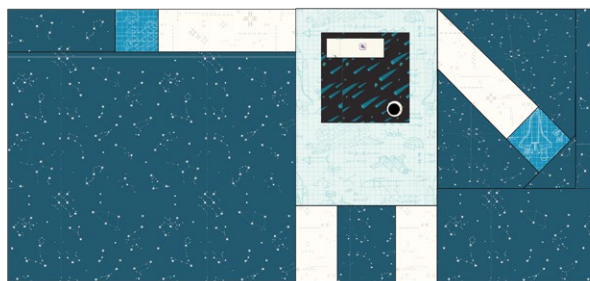
DIAGRAM 41

### Section 15

- Align Section 12, Section 13 and Section 14 and sew them together.



second illustration in next page



## Unit 17

- Make a strip with the following pieces: 1 (one) 3" x 15¼" strip from fabric **A**, 2 (two) 3" x 5" rectangle from fabric **L**, 1 (one) 3" x 4" rectangle from fabric **A** and 1 (one) 3" x 7¾" rectangle from fabric **A**.
- Follow the diagram for the order in which they need to be sewn. This strip should measure 3" x 35"

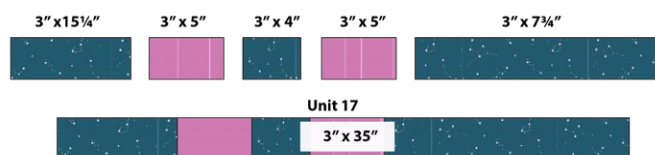


DIAGRAM 43

## Unit 18

- Sew together 1 (one) 4½" x 35" strip from fabric **E**, 1 (one) 4" x 35" strip from fabric **I** and 1 (one) 4" x 35" strip from fabric **H**. This unit should measure 11½" x 35".

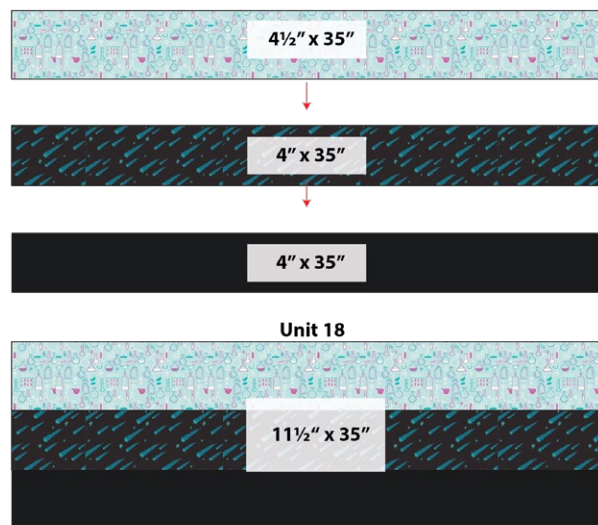


DIAGRAM 44

## Unit 19

- Mark a diagonal line on the wrong side of 1 (one) 8" square from fabric **A**. Using the same corner square technique, place a marked squares, right sides together and edges matched on the corner of Unit 18.
- Sew on the drawn lines. Trim off corners, leaving a ¼" seam allowance. Press corners open.
- Makes 1 (one) Unit 19.

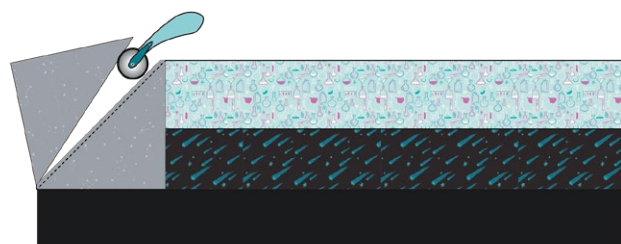
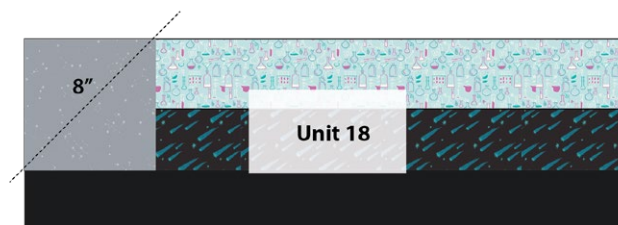


DIAGRAM 45

## Section 16

- Sew Unit 17 and Unit 19 together.

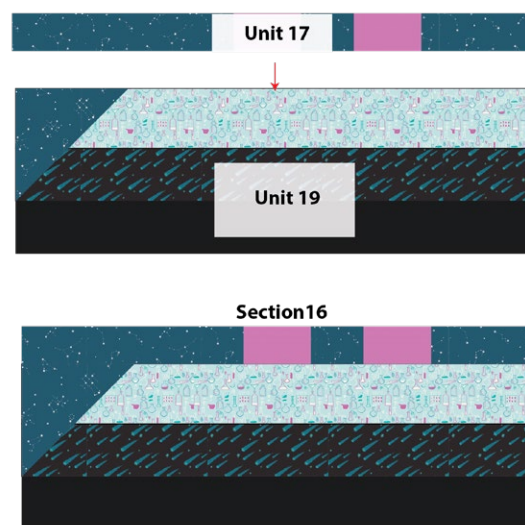
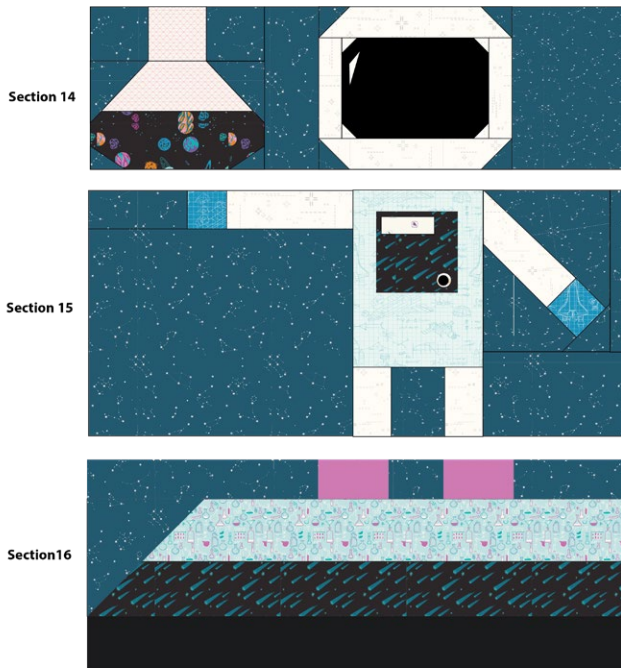


DIAGRAM 46



## Block 3

- Sew together Sections 14, 15 and 16 to create Block 3. This Block should measure 40" x 35".



Block 3

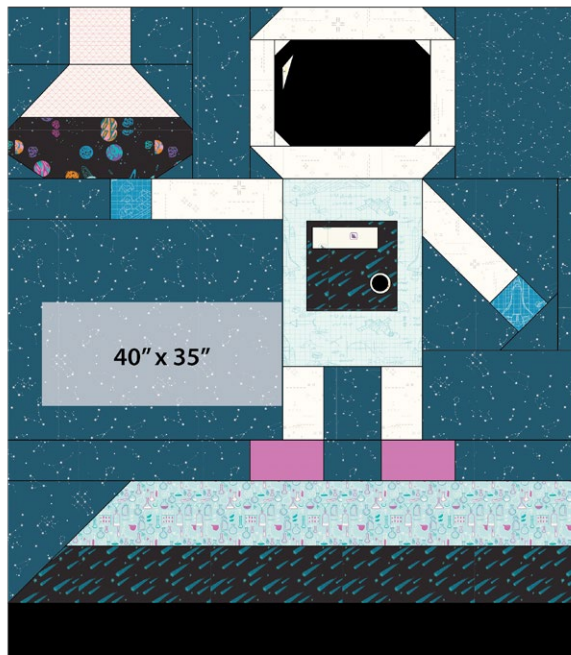


DIAGRAM 47

## Unit 20

- Mark a diagonal line on the wrong side of 4 (four)  $3\frac{1}{2}$ " square from fabric **A**. Using the same corner square technique, place a marked squares, right sides together and edges matched on the corner of a  $14\frac{1}{2}$ " square from fabric **C**. Sew on the drawn lines. Trim off corners, leaving a  $\frac{1}{4}$ " seam allowance. Press corners open.
- Makes 1 (one) Unit 20.

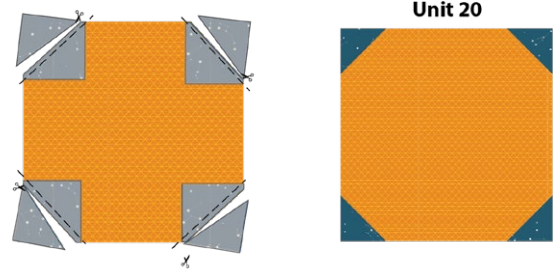


DIAGRAM 48

## Unit 21

- Sew 1 (one)  $14\frac{1}{2}$ " x  $7\frac{1}{2}$ " rectangle from fabric **A** on the left side of Unit 20.

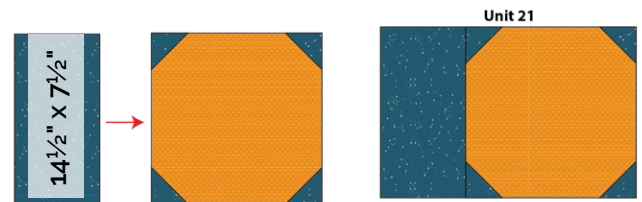


DIAGRAM 49

## Unit 22

- Sew Unit 21 in between 2 (two)  $5$ " x  $21\frac{1}{2}$ " rectangle from fabric **A**. See diagram.

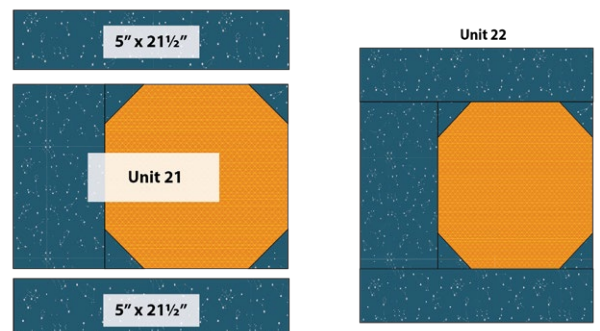


DIAGRAM 50

x x x x x x x x x x x x x x x x x x x x

- Once you have your quilt top sewn together, use steam a seam to apply template A from fabric **L** and **E** on the bottom edge of the rocket ship from Block 1 and Block 2.



- Row 1: Block 4- Block 1 (Make sure you flip Block 1 to match Block 4 as shown on the diagram)
- Row 2: 2 (two) 25½" x 38" rectangles from fabric **A**.
- Row 3: Block 2- Block 3.

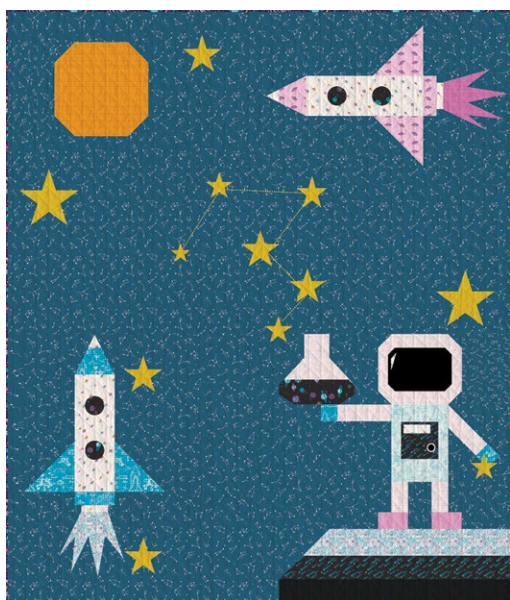


- 

DIAGRAM 54



## QUILT TOP



## QUILT ASSEMBLY

*Sew rights sides together.*

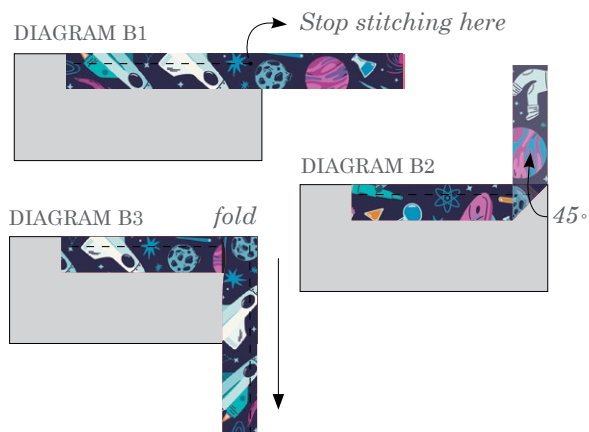
- Place BACKING FABRIC on a large surface wrong side up. Stretch it with masking tape against that surface.
- Place BATTING on top of backing fabric.
- Place TOP on top of the batting with right side facing up. Smooth away wrinkles using your hands.
- Pin all layers together and baste with basting thread, using long stitches. You can also use safety pins to join the layers.
- Machine or hand quilt starting at the center and working towards the corners. Remember that quilting motifs are a matter of personal preference. Have fun choosing yours!
- After you finished, trim excess of any fabric or batting, squaring the quilt to proceed to bind it.

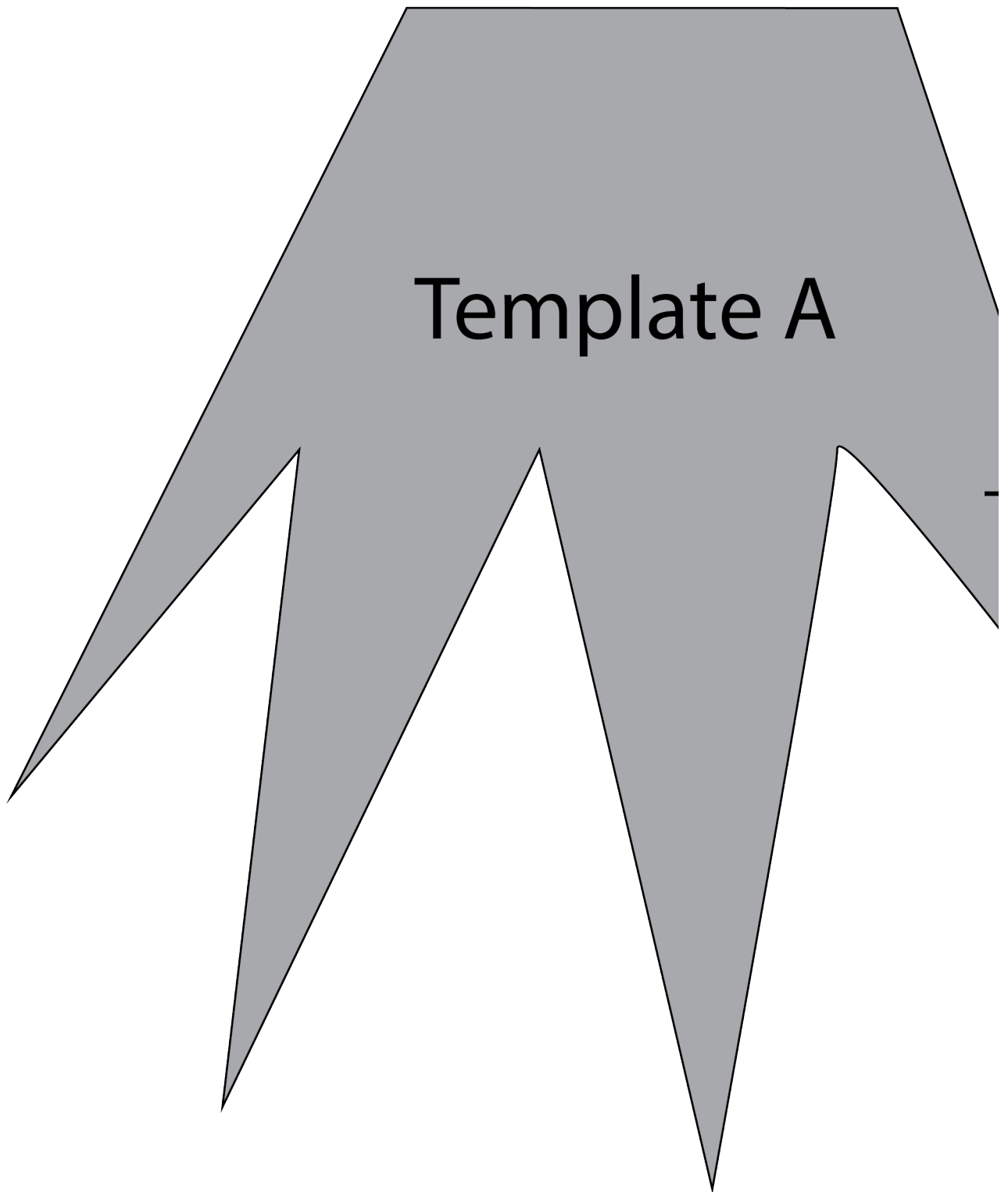
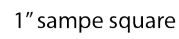
## BINDING

*Sew rights sides together.*

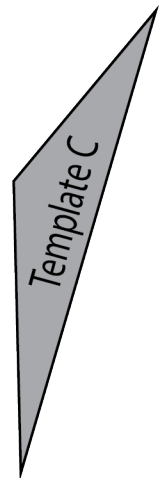
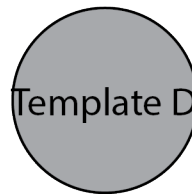
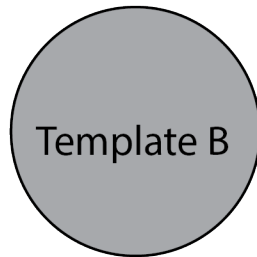
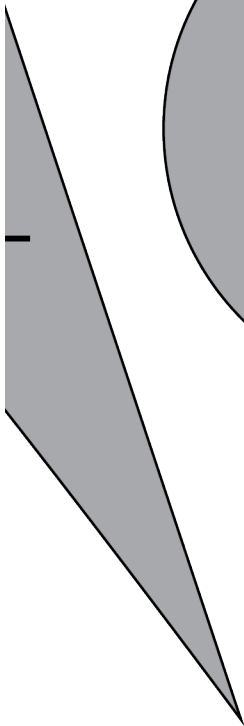
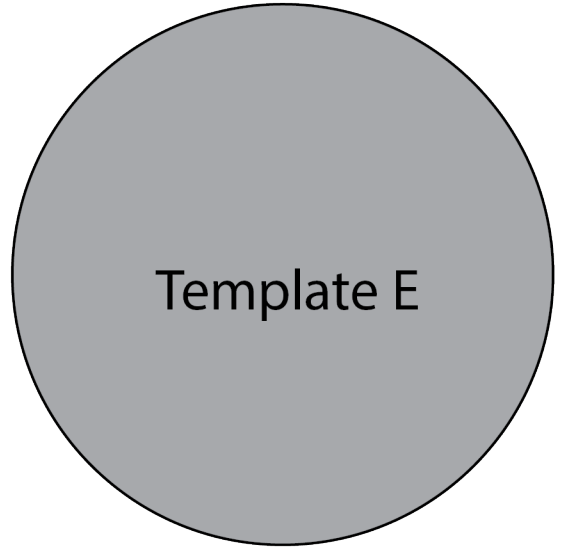
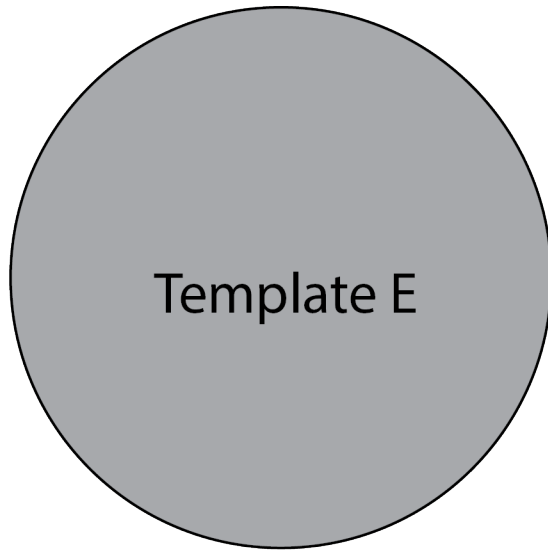
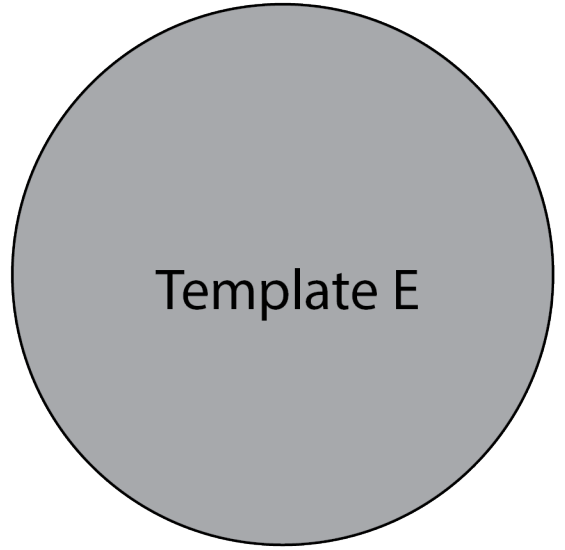
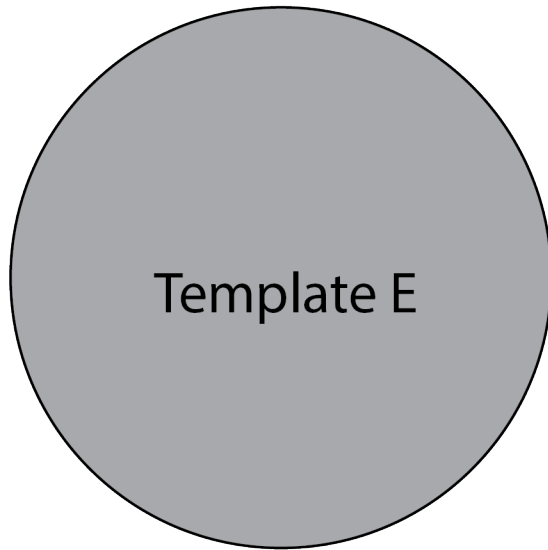
- Cut enough strips 2½" wide by the width of the fabric to make a final strip 342" long. Start sewing the binding strip in the middle of one of the sides of the quilt, placing the strip right side down and leaving an approximated 5" tail. Sew with ¼" seam allowance (using straight stitch), aligning the strip's raw edge with the quilt top's raw edge.

- Stop stitching ¼" before the edge of the quilt (DIAGRAM B 1). Clip the threads. Remove the quilt from under the machine presser foot. Fold the strip in a motion of 45° and upward, pressing with your fingers (DIAGRAM B2). Hold this fold with your finger, bring the strip down in line with the next edge, making a horizontal fold that aligns with the top edge of the quilt (DIAGRAM B3). Start sewing at ¼" of the border, stitching all the layers. Do the same in the four corners of the quilt.
- Stop stitching before you reach the last 5 or 6 inches. Cut the threads and remove the quilt from under the machine presser foot. Lay the loose ends of the binding flat along the quilt edge, folding the ends back on themselves where they meet. Press them together to form a crease. Using this crease as the stitching line, sew the two open ends of the binding with right sides together (you can help yourself marking with a pencil if the crease is difficult to see).
- Trim seam to ¼" and press open. Complete the sewing. Turn binding to back of the quilt, turn raw edge inside and stitch by hand using blind stitch.
- If you are using our 2.5 edition (binding fabric), click or scan this QR code to see a tutorial on how to use this specialty fabric.



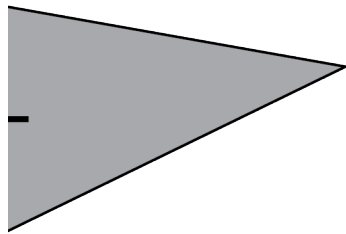












XXXXXXXXXXXXXXXXXXXXXXXXXXXXXXXXXXXX

*Congratulations  
& enjoy*

XXXXXXXXXXXXXXXXXXXXXXXXXXXXXXXXXXXX



[artgalleryfabrics.com](http://artgalleryfabrics.com)

NOTE: While all possible care has been taken to ensure the accuracy of this pattern, We are not responsible for printing errors or the way in which individual work varies.

Please read instructions carefully before starting the construction of this quilt. If desired, wash and iron your fabrics before starting to cut.

© 2025 Courtesy of Art Gallery Quilts LLC. All Rights Reserved.